

Talent Pipeline

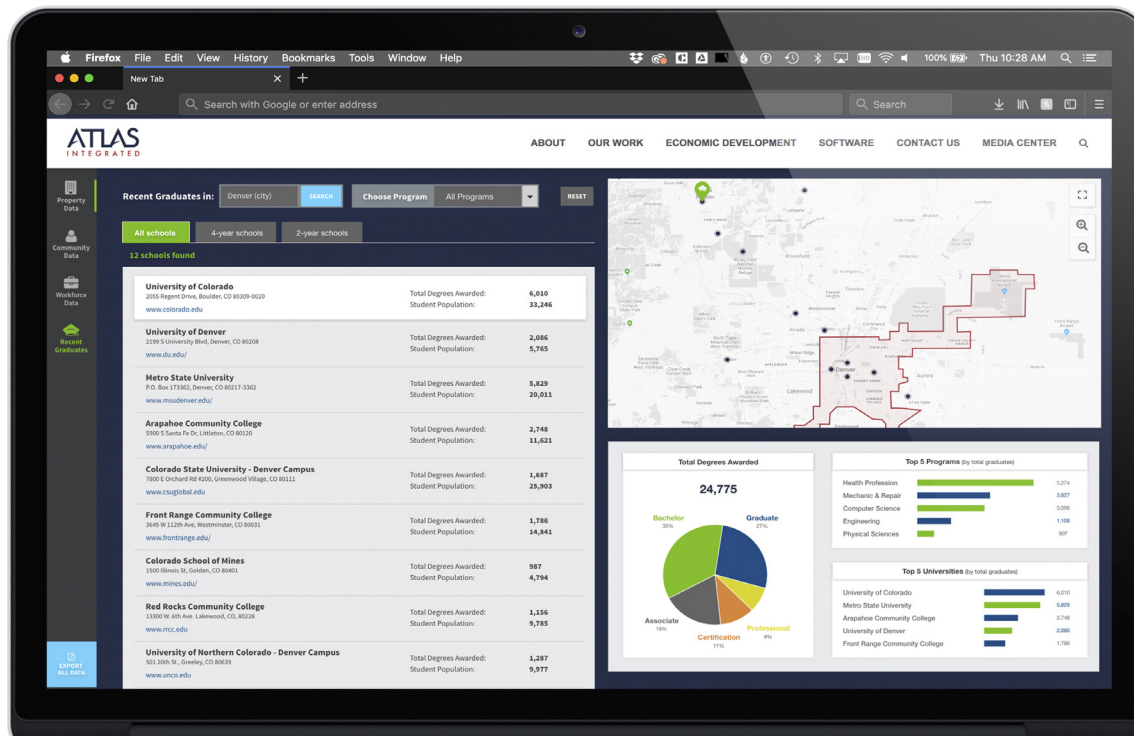
INDUSTRY FIRST SOFTWARE FOR YOUR COMMUNITY

Talent Pipeline is an integral component of **Atlas IQ**. It provides information on a community's potential workforce through higher education data. Data summaries can include names of institutions and number of graduates (both historical and anticipated figures), fields of study or majors applicable to your community's target industries, and total degrees conferred or specialized certifications awarded. Through this tool, you can connect existing and prospective companies with their future talent, or focus on workforce development initiatives that help people further develop and refine their skills.

Watch our video walkthrough to see Talent Pipeline in action at atlas-integrated.com/software

List of Features

- ✔ Program search
 - Search based off classification of instructional programs (CIP)
- ✔ School navigator
 - List of community schools
 - Display graduate/awards data
 - Contact information available
 - IPEDS data powered by Chmura's Jobs EQ
- ✔ API Integration
 - Save you and your staff time
 - Data updated in real time
- ✔ Data panel
 - Includes data visualizations for total degrees awarded, top programs and universities in your region
- ✔ School location map



Contact our team for a personal demo of Talent Pipeline
Kelly@Atlas-Integrated.com

1800 Wazee St., Floor 3, Denver, CO 80202
303-292-3300
www.Atlas-Integrated.com

ATLAS
INTEGRATED