

Workforce IQ

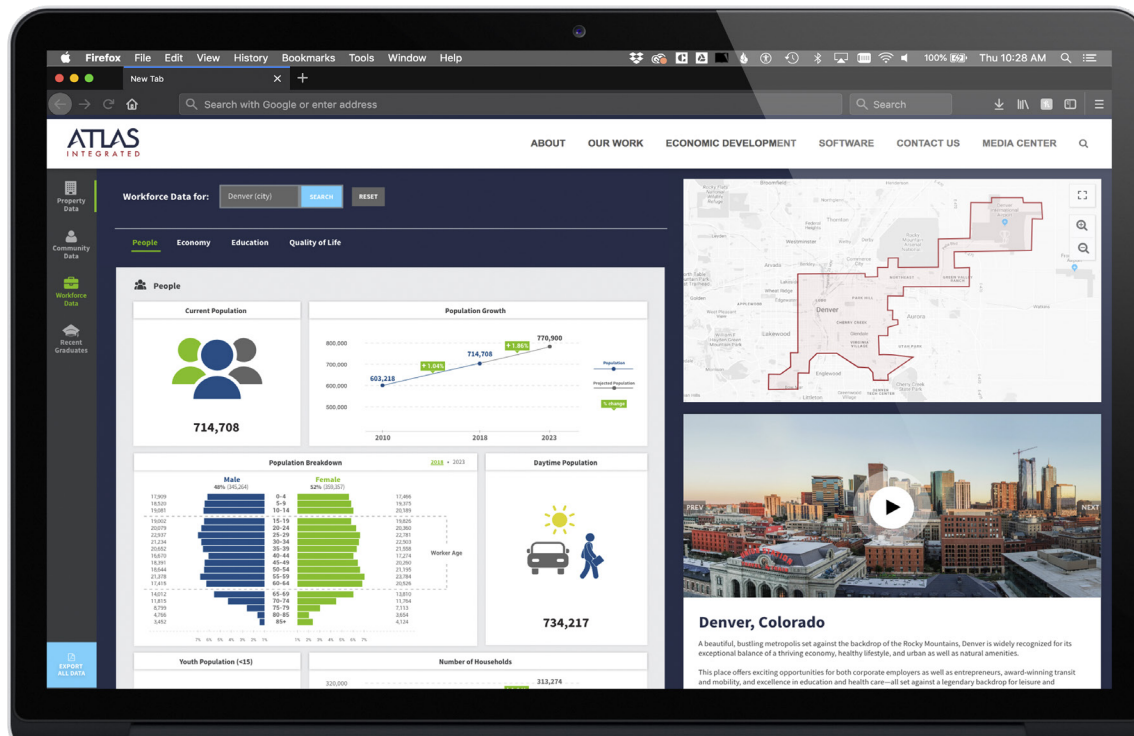
INDUSTRY FIRST SOFTWARE FOR YOUR COMMUNITY

Workforce IQ is an integral component of **Atlas IQ**. It is a data visualization platform that highlights the current and future labor market in your area. It displays key workforce, demographic, and future talent information powered by leading data providers Chmura (JobsEQ) and Esri. Workforce IQ is a critical tool for companies looking to fill vacancies with educated career-seekers, and it's beneficial for potential talent looking for major employers, available jobs, and institutions to further their education. Through Workforce IQ, users can ascertain detailed attributes about a community's overall talent environment and pipeline.

Watch our video walkthrough to see Workforce IQ in action at atlas-integrated.com/software

List of Features

- ✔ Workforce dashboard
 - Data visualizations displaying past, current, and future workforce and talent data in the county, region or state
 - Interactive charts to show projections and comparisons to state and national averages
 - Library of data variables to choose from including specific industry and occupational data, wage data, quality of life data
- ✔ API Integration for time savings
 - Demographic data powered by Esri
 - Labor Market Information powered by Chmura's Jobs EQ data
- ✔ Interactive map
 - Allows user to visually see and search communities for enhanced user experience
 - Powered by ArcGIS
- ✔ Storytelling panel
 - Customizable panel for content including images, videos, contact info to help tell your communities unique workforce story



Contact our team for a personal demo of Workforce IQ
Kelly@Atlas-Integrated.com

1860 Blake Street Ste. B101, Denver, CO 80202
303-292-3300
www.Atlas-Integrated.com

ATLAS
INTEGRATED